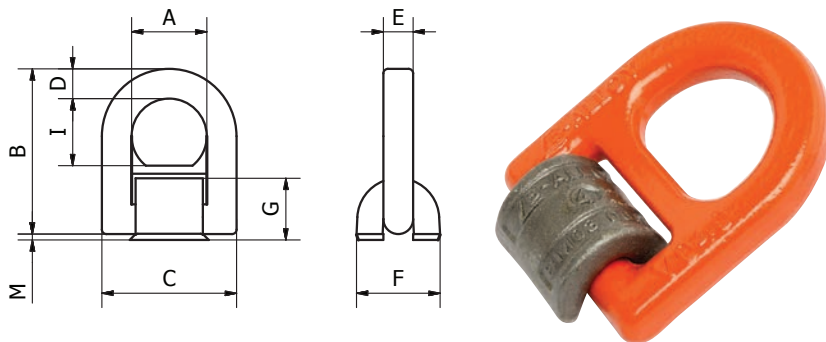


## B-ALLOY-V WELD-ON LIFTING AND LASHING RINGS

### B-ALLOY-V WELD-ON LIFTING AND LASHING RINGS

Code	WLL Tonnes (kg)	A mm	B mm	C mm	D mm	E mm	F mm	G mm	I mm	M mm	Weld mm HV+aL	Weight (kg)
BALPV015	1500	38	79	66	14	13.5	32	25	31	2	HV5+3	0.40
BALPV025	2500	45	92.5	77	16	13.5	36	27	38	3.5	HV7+3	0.60
BALPV040	4000	51	102	87	18	16.5	42	32	40.5	2	HV8+3	0.90
BALPV067	6700	67	138	115	24	22.5	61	44	55	4	HV12+4	2.0
BALPV100	10000	67.5	142	129	26.5	57.5	75	53	57.5	4	HV16+4	3.0
BALPV160	16000	100	215	190	40	26	95	69	85	5	HV25+6	6.9



### WELDING INSTRUCTIONS & PROCEDURES

The welding should only be carried out according to EN 287 or AWS Standards by an authorised welder.

Beaver Code	WLL Tonnes	Weld Size	Weld Length	Weld Volume
BALPV015	1.5	HV 5+a3 $\triangle$	2 x 33mm	ca. 1,2cm <sup>3</sup>
BALPV025	2.5	HV 7+a3 $\triangle$	2 x 40mm	ca. 2,6cm <sup>3</sup>
BALPV040	4	HV 8+a3 $\triangle$	2 x 40mm	ca. 3,2cm <sup>3</sup>
BALPV067	6.7	HV 12+a4 $\triangle$	2 x 60mm	ca. 8.7cm <sup>3</sup>
BALPV100	10	HV 16+a4 $\triangle$	2 x 60mm	ca. 15,5cm <sup>3</sup>
BALPV160	16	HV 25+a6 $\triangle$	2 x 90mm	ca. 56cm <sup>3</sup>

Detailed welding instructions are available on request.