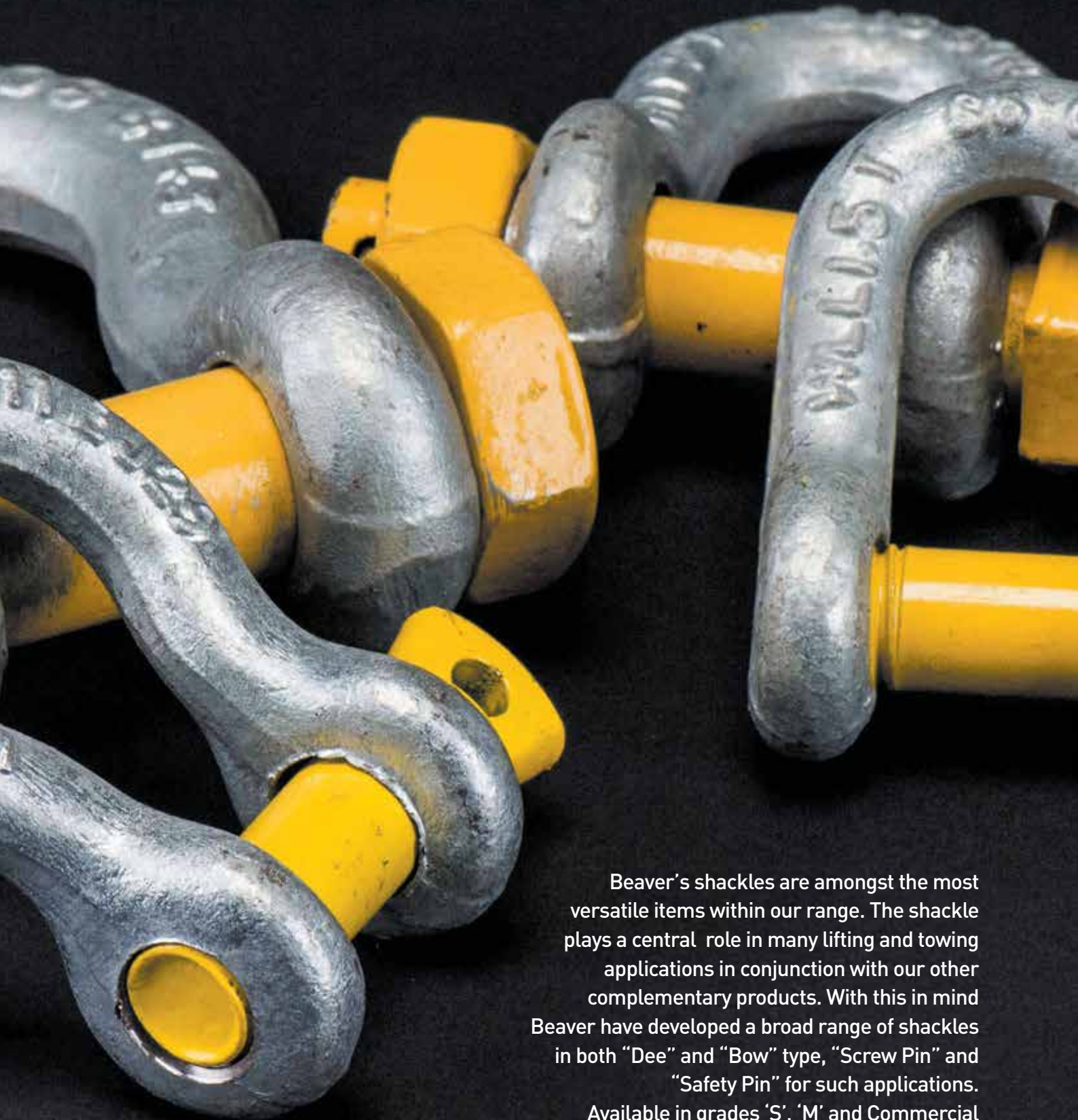




SHACKLES

4



Beaver's shackles are amongst the most versatile items within our range. The shackle plays a central role in many lifting and towing applications in conjunction with our other complementary products. With this in mind Beaver have developed a broad range of shackles in both "Dee" and "Bow" type, "Screw Pin" and "Safety Pin" for such applications.

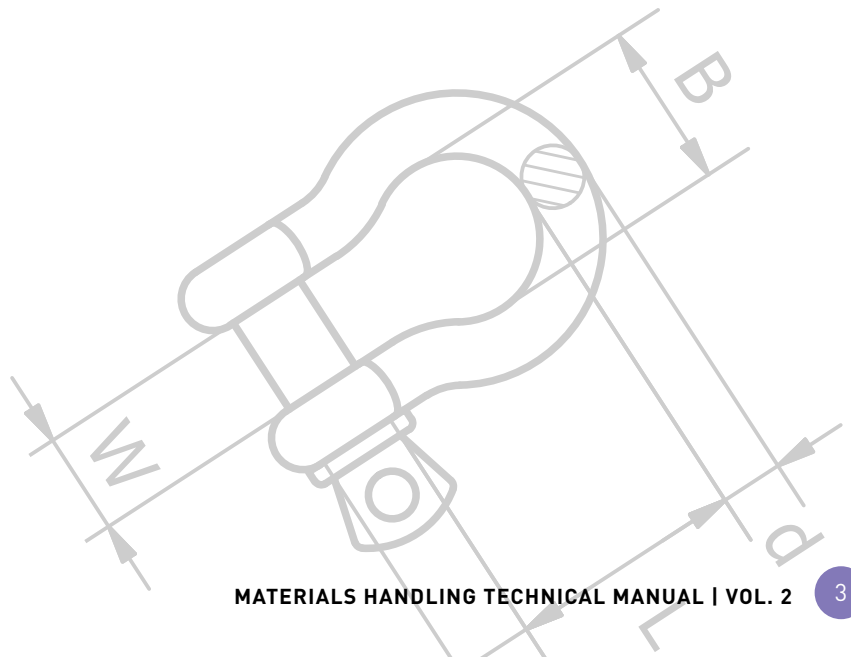
Available in grades 'S', 'M' and Commercial Quality, the Beaver range of shackles are made to the highest quality standards providing the user with assurances. When you need a shackle you can be confident that Beaver will have the right one to service your requirement.



# Contents

## SHACKLES

BEAVER SHACKLES PRODUCT INFORMATION	4
BEAVER GRADE 'S' SHACKLES IN BUCKETS	8
BEAVER YELLOW PIN GRADE 'S' SHACKLES	10
BEAVER YELLOW PIN GRADE 'S' SAFETY PIN SHACKLES	12
BEAVER GRADE 'M' SHACKLES	14
BEAVER COMMERCIAL GRADE SHACKLES IN BUCKETS	16
PRODUCT REFERENCE GUIDE	18



## BEAVER SHACKLES PRODUCT INFORMATION

### Shackle Information

Shackles are used in lifting and static systems as removable links to connect (steel) wire rope, chain and other fittings.

Screw pin shackles are used mainly for non-permanent applications.

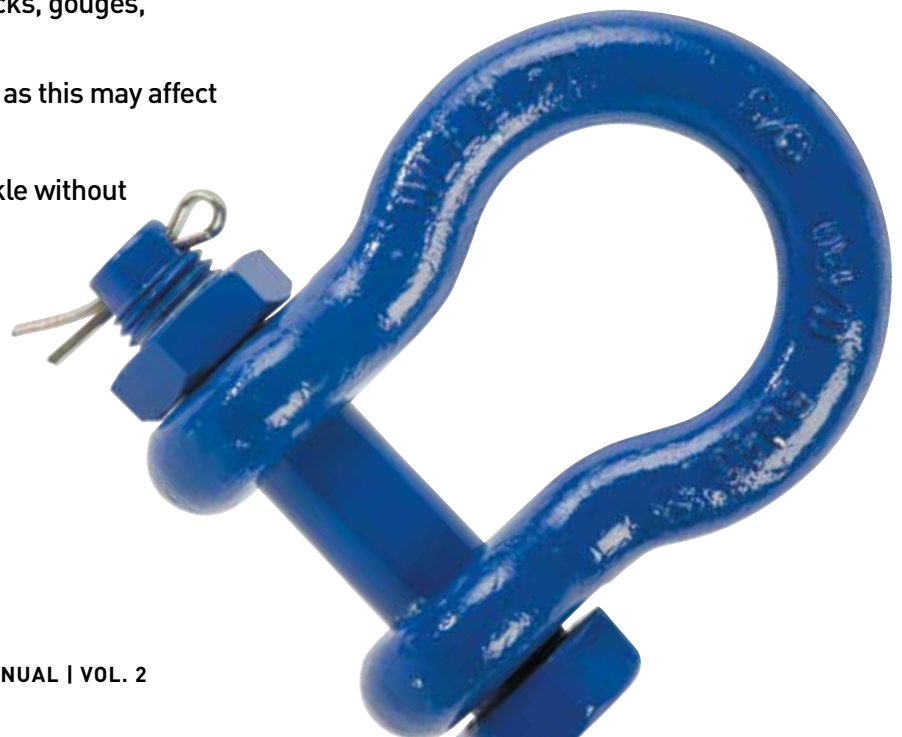
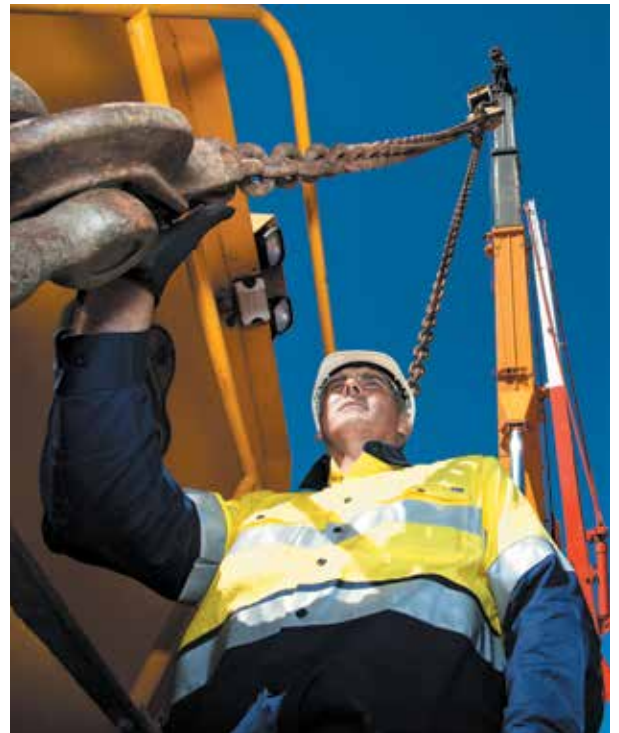
Safety pin shackles are used for long-term or permanent applications or where the load may slide on the pin causing rotation of the pin.

Dee shackles are mainly used on one-leg systems whereas anchor or bow shackles are mainly used on multi-leg systems.

Shackles should be inspected before use to ensure that:

- ▶ All markings are legible
- ▶ The threads of the pin and the body are undamaged
- ▶ The body and the pin are not distorted or unduly worn
- ▶ The body and pin are free from nicks, gouges, cracks and corrosion
- ▶ Shackles may not be heat treated as this may affect their Working Load Limit
- ▶ Never use a safety bolt type shackle without using the split cotter pin

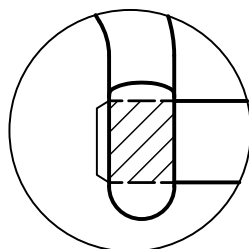
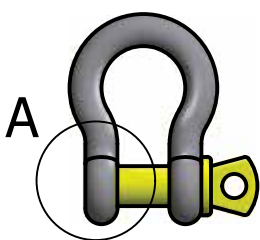
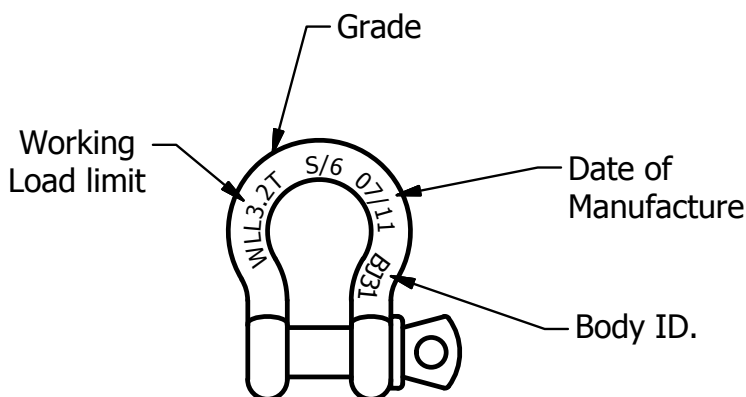
Never modify, repair or reshape a shackle by welding, heating or bending as this will affect the Working Load Limit (W.L.L).



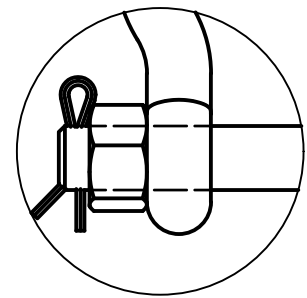
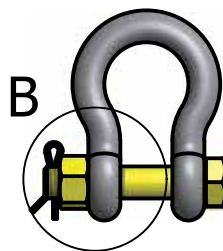
## Beaver Grade 'S' Shackles

Beaver Grade S Shackles are a rated shackle that meet the requirement of AS 2741. Grade 'S' shackles are recommended where high strength is required such as lifting, towing and 4WD applications.

- Available in both Dee and Bow configurations
- Available in both Screw pin and Safety Pin type – see detail A and B for more information
- Because the pin holds more load than the body, the pin diameter is larger than the body diameter
- For the same W.L.L., they are smaller than Grade 'M'
- Beaver's Grade 'S' shackles come in two colour configurations:
  - Beaver Standard Grade 'S': Yellow pin
  - Beaver Colour Coded Grade 'S': Body and pin colour coded for easy match to components
- The Body ID and date of Manufacture = the Batch ID



Detail A  
Screw Pin



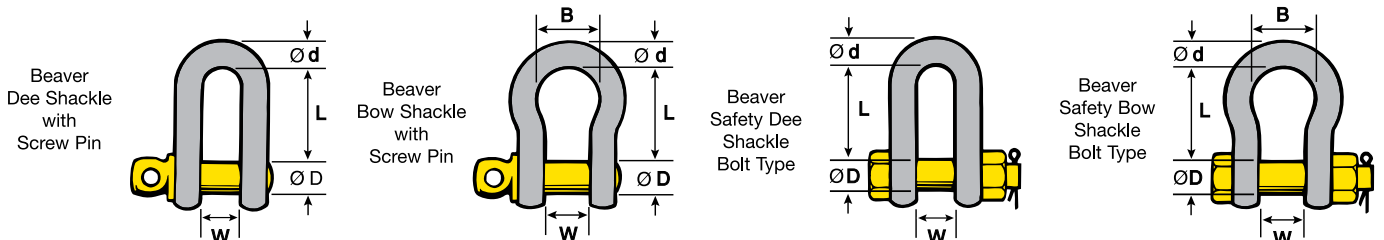
Detail B  
Safety Pin

## BEAVER SHACKLES PRODUCT INFORMATION

### Beaver Alloy Grade 'S' or '6' Shackles - Reference Guide

With yellow painted pin to AS 2741

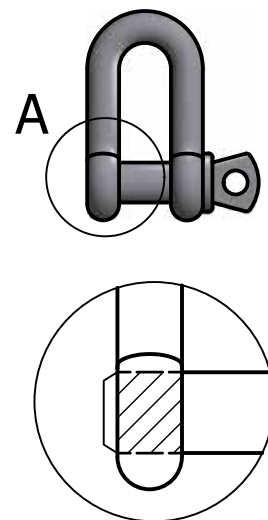
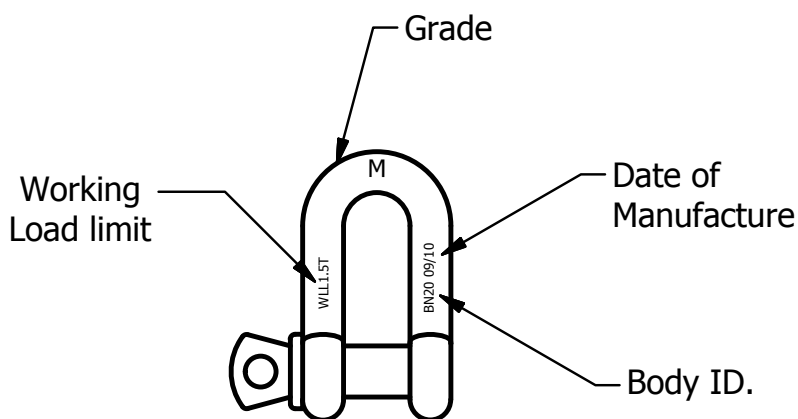
W.L.L Tonne	DIA d mm	DIA PIN D mm	Inside Width W mm	Inside Length		Width of Bow B mm	Approx Weight Each	
				Dee Type L mm	Bow Type L mm		Screw Pin Kg	Safety Pin Kg
0.33	5	6	10	—	22	15	0.02	—
0.5	6	8	12	22	29	20	0.06	0.07
0.75	8	10	13	26	31	21	0.11	0.13
1	10	11	17	32	37	26	0.15	0.17
1.5	11	13	18	37	43	29	0.21	0.25
2	13	16	21	41	48	33	0.37	0.44
3.2	16	19	27	51	61	43	0.65	0.79
4.7	19	22	32	60	72	51	1.06	1.26
6.5	22	25	37	71	84	58	1.56	1.88
8.5	25	29	43	81	95	68	2.32	2.78
9.5	29	32	46	90	108	74	3.28	3.87
12	32	35	52	100	119	83	4.51	5.26
13.5	35	38	57	113	133	92	5.43	6.94
17	38	41	60	124	146	98	7.89	8.79
25	44	51	73	146	178	127	13.40	14.99
35	51	57	83	171	197	146	18.85	20.65
45	57	63	95	181	222	160	26.06	29.01
55	63	70	105	203	267	184	37.86	41.05
85	76	83	127	229	330	200	58.68	62.24
120	89	95	146	267	381	241	—	110.00
150	102	108	165	318	432	279	—	160.00



## Beaver Grade 'M' Shackles

Beaver Grade 'M' Shackles are a rated shackle that comply with the requirements of AS 2741. Grade 'M' shackles are commonly used in marine applications.

- Only available in Dee configuration
- Screw pin type only – please see drawing A for more information
- Because the pin holds more load than the body, the pin diameter is larger than the body diameter
- The Body ID and date of Manufacture = the Batch ID



Detail A  
Screw Pin

## Beaver Commercial Shackles

Beaver Commercial Grade Shackles are for general purpose use only and are available in both hot dipped galvanised and electro galvanised finishes. They are not produced to any standard.

- Commercial Galvanised Shackles are available in both Dee and Bow type configuration
- Commercial Electro Galvanised Shackles are available in Dee type configuration only
- Screw pin type only
- Unlike other types of shackles, commercial shackles have the same diameter pin as the body
- Not suitable for lifting or towing





## BEAVER GRADE 'S' SHACKLES IN BUCKETS



Beaver's shackles in buckets offer less handling to reduce cost whilst enabling better inventory control. Supplied in a merchandise display friendly with a P.O.S. Barcode Sales Aid available.

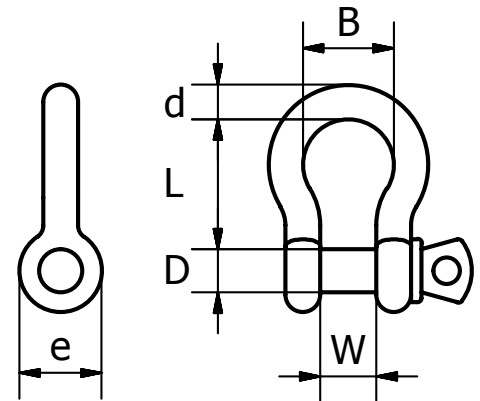


### Beaver Colour Coded Screw Pin

Sizes 10mm - 25mm

Beaver Code	Size mm	Working Load Limit tonnes	Shackle Colour	Dia. d mm	Pin Dia. D mm	Inside Width W mm	Inside Length L mm	Dia. Boss e mm	Width of Bow B mm	Approx. Weight each kg	Square Bucket	Qty / Bucket	Weight / Bucket
242310MP	10 x 11	1.00	Violet	10	11	17	37	25	26	0.15	2L	30	4.23
242313MP	13 x 16	2.00	Green	13	16	21	48	33	33	0.37	2L	14	4.62
242316MP	16 x 19	3.20	Yellow	16	19	27	61	40	43	0.65	5L	20	12.40
242319MP	19 x 22	4.70	Grey	19	22	32	72	48	51	1.06	5L	10	10.70
242322MP	22 x 25	6.50	Brown	22	25	37	84	54	58	1.56	5L	8	13.12
242325MP	25 x 29	8.50	Blue	25	29	43	95	60	68	2.32	5L	4	9.20

- ▶ Beaver Alloy Grade 'S' colour coded shackles have been developed in accordance with Australian Standard AS 2741.
- ▶ All Beaver Grade 'S' shackles are easily identified with prominent stamping indicating MM/YY for quick reference of the products manufacture and working load limit.
- ▶ Test certificates are readily available on request.
- ▶ Suitable for mining, resource and construction industry applications.
- ▶ Our colour coded shackles take the guess work out of choosing the right capacity when matching lifting components.

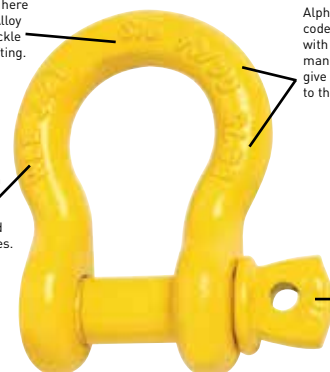


The mark S/6 here indicates an Alloy Grade 'S' shackle suitable for lifting.

Alpha-numeric codes in conjunction with Month & Year of manufacture (mm/yy) give quick reference back to the test certificate.

Individually stamped with the W.L.L. showing the Working Load Limit in tonnes.

S/6 indicates an Alloy Grade 'S' shackle pin.





# SHACKLES

# SECTION 4



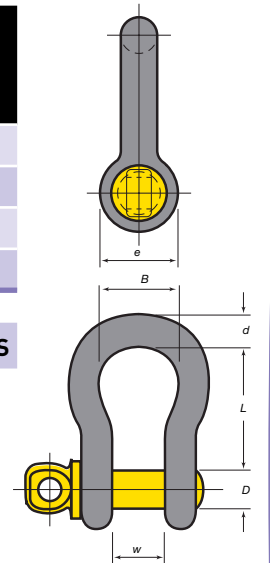
## Beaver Hot Dipped Galvanised Screw Pin

Bow Shackle Bucket - Sizes 5mm - 25mm

Beaver Code	Size mm	Working Load Limit tonnes	Dia. d mm	Pin Dia. D mm	Inside Width w	Width of Bow B mm	Inside Length L mm	Dia. Boss e mm	Square Bucket	Qty / Bucket	Weight / Bucket
242305P	5 x 6	0.33	5	6	10	15	22	14	2L	100	2.70
242306P	6 x 8	0.50	6	8	12	20	29	17	2L	100	3.00
242308P	8 x 10	0.75	8	10	13	21	31	21	2L	50	4.30
242311P	11 x 13	1.50	11	13	18	29	43	27	2L	20	4.44

NOTE: Dimensions are nominal - actual dimensions fall within the tolerances of AS 2741.

**BOW SHACKLES UP TO 8.5T ARE ONLY AVAILABLE IN BUCKETS**



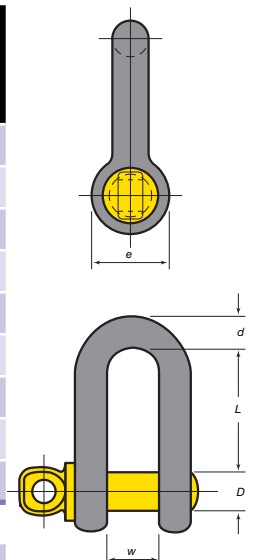
## Beaver Hot Dipped Galvanised Screw Pin

Dee Shackle Bucket - Sizes 6mm - 25mm

Beaver Code	Size mm	Working Load Limit tonnes	Shackle Colour	Dia. d mm	Pin Dia. D mm	Inside Width W mm	Inside Length L mm	Dia. Boss e mm	Square Bucket	Qty / Bucket	Weight / Bucket
241306P	6 x 8	0.5	HDG	6	8	12	22	17	2L	100	2.80
241308P	8 x 10	0.75	HDG	8	10	13	26	21	2L	50	3.85
241310P	10 x 11	1.00	HDG	10	11	17	32	25	2L	30	3.90
241311P	11 x 13	1.50	HDG	11	13	18	37	27	2L	20	4.00
241313P	13 x 16	2.00	HDG	13	16	21	41	33	2L	14	4.20
241316P	16 x 19	3.20	HDG	16	19	27	51	40	5L	20	11.60
241319P	19 x 22	4.70	HDG	19	22	32	60	48	5L	10	10.20
241322P	22 x 25	6.50	HDG	22	25	37	71	54	5L	8	11.44
241325P	25 x 29	8.50	HDG	25	29	43	81	60	5L	4	8.62

NOTE: Dimensions are nominal - actual dimensions fall within the tolerances of AS 2741.

**DEE SHACKLES UP TO 8.5T ARE ONLY AVAILABLE IN BUCKETS**

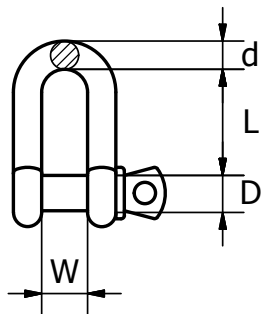


## BEAVER YELLOW PIN GRADE 'S' SHACKLES

### Beaver Yellow Pin Grade 'S' Screw Pin Shackles to AS 2741

Chain Dee Type - Capacities 0.5 - 35 tonne

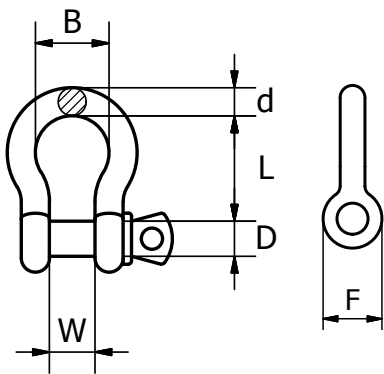
Code	Size mm	W.L.L Tonne	Type	Shape	Closing Method	DIA d mm	DIA PIN D mm	Inside Width W mm	Inside Length L mm	DIA Boss F mm	Approx Weight Kg	UOM	Pack Qty
241329	29 x 32	9.50	Grade S	Dee	Screw	29	32	46	90	67	3.28	Each	8
241332	32 x 35	12.00	Grade S	Dee	Screw	32	35	52	100	76	4.51	Each	5
241335	35 x 38	13.50	Grade S	Dee	Screw	35	38	57	113	84	5.43	Each	4
241338	38 x 41	17.00	Grade S	Dee	Screw	38	41	60	124	92	7.89	Each	3
241344	44 x 51	25.00	Grade S	Dee	Screw	44	51	73	146	110	13.4	Each	2
241351	51 x 57	35.00	Grade S	Dee	Screw	51	57	83	171	127	18.85	Each	1



## Beaver Yellow Pin Grade 'S' Screw Pin Shackles to AS 2741

Anchor Bow Type - Capacities 0.33 - 55 tonne

Code	Size mm	W.L.L Tonne	Type	Shape	Closing Method	DIA d mm	DIA PIN D mm	Inside Width W mm	Inside Length L mm	Width of Bow B mm	DIA Boss F mm	Approx Weight Kg	UOM	Pack Qty
242329	29 x 32	9.5	Grade S	Bow	Screw	29	32	46	108	74	67	3.28	Each	6
242332	32 x 35	12	Grade S	Bow	Screw	32	35	52	119	83	76	4.51	Each	5
242335	35 x 38	13.5	Grade S	Bow	Screw	35	38	57	133	92	84	5.43	Each	3
242338	38 x 41	17	Grade S	Bow	Screw	38	41	60	146	98	92	7.89	Each	3
242344	44 x 51	25	Grade S	Bow	Screw	44	51	73	178	127	110	13.40	Each	2
242351	51 x 57	35	Grade S	Bow	Screw	51	57	83	197	146	127	18.85	Each	1
242363	63 x 70	55	Grade S	Bow	Screw	63	70	105	267	184	152	37.86	Each	1

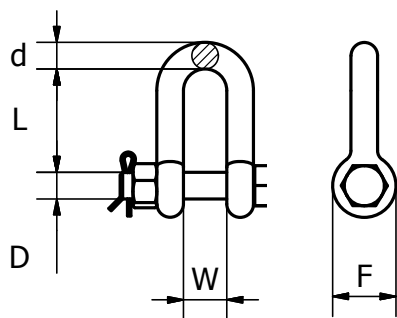


## BEAVER YELLOW PIN GRADE 'S' SAFETY PIN SHACKLES

### Yellow Pin Grade 'S' Safety Pin Shackles to AS 2741

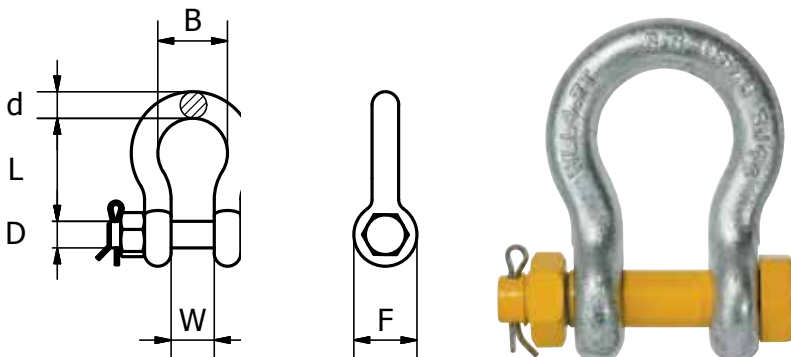
Dee Type - Capacities 2.0 - 13.5 tonne

Code	Size mm	W.L.L Tonne	Type	Shape	Closing Method	DIA d mm	DIA PIN D mm	Inside Width W mm	Inside Length L mm	DIA Boss F mm	Approx Weight Kg	UOM	Pack Qty
243313	13 x 16	2.00	Grade S	Dee	Safety Pin	13	16	21	41	33	0.44	Each	60
243316	16 x 19	3.20	Grade S	Dee	Safety Pin	16	19	27	51	40	0.79	Each	35
243319	19 x 22	4.70	Grade S	Dee	Safety Pin	19	22	32	60	48	1.26	Each	20
243322	22 x 25	6.50	Grade S	Dee	Safety Pin	22	25	37	71	54	1.88	Each	12
243325	25 x 29	8.50	Grade S	Dee	Safety Pin	25	29	43	81	60	2.78	Each	10
243329	29 x 32	9.50	Grade S	Dee	Safety Pin	29	32	46	90	67	3.87	Each	8
243332	32 x 35	12.00	Grade S	Dee	Safety Pin	32	35	52	100	76	5.26	Each	4



**Beaver Yellow Pin Grade 'S' Safety Pin Shackles to AS 2741***Anchor Bow Type - Capacities 2.0 - 55 tonne*

Code	Size mm	W.L.L Tonne	Type	Shape	Closing Method	DIA d mm	DIA PIN D mm	Inside Width W mm	Inside Length L mm	Width of Bow B mm	DIA Boss F mm	Approx Weight Kg	UOM	Pack Qty
244313	13 x 16	2.00	Grade S	Bow	Safety Pin	13	16	21	48	33	33	0.44	Each	50
244316	16 x 19	3.20	Grade S	Bow	Safety Pin	16	19	27	61	43	40	0.79	Each	30
244319	19 x 22	4.70	Grade S	Bow	Safety Pin	19	22	32	72	51	48	1.26	Each	20
244322	22 x 25	6.50	Grade S	Bow	Safety Pin	22	25	37	84	58	54	1.88	Each	12
244325	25 x 29	8.50	Grade S	Bow	Safety Pin	25	29	43	95	68	60	2.78	Each	10
244329	29 x 32	9.50	Grade S	Bow	Safety Pin	29	32	46	108	74	67	3.87	Each	6
244332	32 x 35	12.00	Grade S	Bow	Safety Pin	32	35	52	119	83	76	5.26	Each	4
244335	35 x 38	13.50	Grade S	Bow	Safety Pin	35	38	57	133	92	84	6.94	Each	4
244338	38 x 41	17.00	Grade S	Bow	Safety Pin	38	41	60	146	98	92	8.79	Each	2
244345	45 x 51	25.00	Grade S	Bow	Safety Pin	45	51	73	178	127	110	14.99	Each	1
244351	51 x 57	35.00	Grade S	Bow	Safety Pin	51	57	83	197	146	127	20.65	Each	1
244357	57 x 63	45.00	Grade S	Bow	Safety Pin	57	63	97	218	156	136	32.50	Each	1
244363	63 x 70	55.00	Grade S	Bow	Safety Pin	63	70	105	267	184	152	41.05	Each	1

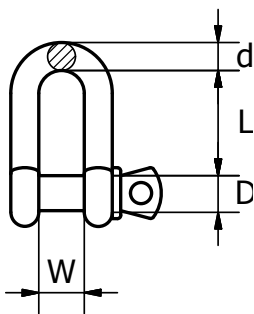


## BEAVER GRADE 'M' SHACKLES

### Beaver Grade 'M' Large Dee Shackles AS 2741

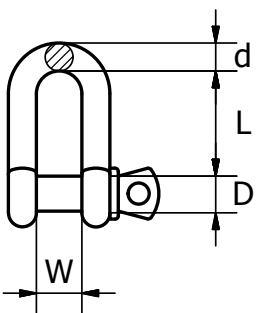
Self Colour - Capacities 0.5 - 20 tonne

Code	Size mm	W.L.L Tonne	Type	Finish	Shape	Closing Method	DIA d mm	DIA PIN D mm	Inside Width W mm	Inside Length L mm	DIA Boss F mm	Approx Weight Kg	UOM	Pack Qty
230010	10 x 13	0.50	Grade M	Self Colour	Dee	Screw	10	13	19	38	25	0.16	Each	200
230013	13 x 16	0.75	Grade M	Self Colour	Dee	Screw	13	16	28	54	32	0.35	Each	80
230016	16 x 19	1.50	Grade M	Self Colour	Dee	Screw	16	19	32	63	38	0.61	Each	50
230020	19 x 22	2.00	Grade M	Self Colour	Dee	Screw	19	22	38	73	44	1.10	Each	30
230023	22 x 25	3.00	Grade M	Self Colour	Dee	Screw	22	25	44	83	51	1.50	Each	25
230025	25 x 29	3.80	Grade M	Self Colour	Dee	Screw	25	29	51	95	57	2.14	Each	15
230028	29 x 32	5.00	Grade M	Self Colour	Dee	Screw	29	32	54	105	63	2.98	Each	10
230032	32 x 35	6.00	Grade M	Self Colour	Dee	Screw	32	35	60	114	70	3.10	Each	5
230035	35 x 38	7.00	Grade M	Self Colour	Dee	Screw	35	38	67	127	76	4.61	Each	5
230038	38 x 44	9.50	Grade M	Self Colour	Dee	Screw	38	44	70	137	89	8.01	Each	5
230042	41 x 48	11.00	Grade M	Self Colour	Dee	Screw	41	48	76	146	95	10.48	Each	3
230045	44 x 51	13.00	Grade M	Self Colour	Dee	Screw	44	51	83	156	102	12.65	Each	3
230050	51 x 57	16.00	Grade M	Self Colour	Dee	Screw	51	57	98	114	114	18.50	Each	1
230056	57 x 63	20.00	Grade M	Self Colour	Dee	Screw	57	63	108	210	127	28.00	Each	1



**Beaver Grade 'M' Grade Dee Shackles AS 2741***Galvanised - Capacities 0.25 - 20 tonne*

Code	Size mm	W.L.L Tonne	Type	Finish	Shape	Closing Method	DIA d mm	DIA PIN D mm	Inside Width W mm	Inside Length L mm	DIA Boss F mm	Approx Weight Kg	UOM	Pack Qty
230306	6 x 10	0.25	Grade M	Galvanised	Dee	Screw	6	10	13	25	19	0.061	Each	600
230310	10 x 13	0.50	Grade M	Galvanised	Dee	Screw	10	13	19	38	25	0.16	Each	200
230313	13 x 16	0.75	Grade M	Galvanised	Dee	Screw	13	16	28	54	32	0.35	Each	80
230316	16 x 19	1.50	Grade M	Galvanised	Dee	Screw	16	19	32	63	38	0.61	Each	50
230320	19 x 22	2.00	Grade M	Galvanised	Dee	Screw	19	22	38	73	44	1.10	Each	30
230323	22 x 25	3.00	Grade M	Galvanised	Dee	Screw	22	25	44	83	51	1.50	Each	25
230325	25 x 29	3.80	Grade M	Galvanised	Dee	Screw	25	29	51	95	57	2.14	Each	15
230328	29 x 32	5.00	Grade M	Galvanised	Dee	Screw	29	32	54	105	63	2.98	Each	10
230332	32 x 35	6.00	Grade M	Galvanised	Dee	Screw	32	35	60	114	70	3.10	Each	5
230335	35 x 38	7.00	Grade M	Galvanised	Dee	Screw	35	38	67	127	76	4.61	Each	5
230338	38 x 44	9.50	Grade M	Galvanised	Dee	Screw	38	44	70	137	89	8.01	Each	5
230342	41 x 48	11.00	Grade M	Galvanised	Dee	Screw	41	48	76	146	95	10.48	Each	3



## BEAVER COMMERCIAL GRADE SHACKLES IN BUCKETS

### Beaver Commercial Hot Dipped Galvanised

*Dee Shackle - Sizes 5mm - 25mm*

Code	Size mm	Finish	Shape	Closing Method	Round Bucket Litres	Qty / Bucket	Weight / Bucket kg
200305P	5	Galvanised	Dee	Screw	0.75	50	0.68
200306P	6	Galvanised	Dee	Screw	0.75	50	1.24
200308P	8	Galvanised	Dee	Screw	1	40	2.2
200310P	10	Galvanised	Dee	Screw	2	30	3.36
200313P	13	Galvanised	Dee	Screw	5	30	7.0
200316P	16	Galvanised	Dee	Screw	5	20	9.18
200320P	20	Galvanised	Dee	Screw	3	6	5.80
200325P	25	Galvanised	Dee	Screw	5	6	10.2

**NOT TO BE USED FOR LIFTING**



### Beaver Commercial Hot Dipped Galvanised

*Bow Shackle - Sizes 5mm - 25mm*

Code	Size mm	Finish	Shape	Closing Method	Round Bucket	Qty / Bucket	Weight / Bucket kg
205305P	5	Galvanised	Bow	Screw	0.75	50	0.36
205306P	6	Galvanised	Bow	Screw	0.75	50	1.32
205308P	8	Galvanised	Bow	Screw	1	40	2.3
205310P	10	Galvanised	Bow	Screw	2	30	3.4
205313P	13	Galvanised	Bow	Screw	5	30	6.98
205316P	16	Galvanised	Bow	Screw	5	20	9.68
205320P	20	Galvanised	Bow	Screw	3	6	5.4
205325P	25	Galvanised	Bow	Screw	5	6	10.66

**NOT TO BE USED FOR LIFTING**





**Beaver Commercial Electro Galvanised***Dee Shackle - Sizes 5mm - 25mm*

Code	Size mm	Finish	Shape	Closing Method	Round Bucket Litres	Qty / Bucket	Weight / Bucket kg
200205P	5	Electro Galvanised	Dee	Screw	0.75	50	0.7
200206P	6	Electro Galvanised	Dee	Screw	0.75	50	1.24
200208P	8	Electro Galvanised	Dee	Screw	1	40	2.2
200210P	10	Electro Galvanised	Dee	Screw	2	30	3.24
200213P	13	Electro Galvanised	Dee	Screw	5	30	6.88
200216P	16	Electro Galvanised	Dee	Screw	5	20	8.98
200220P	20	Electro Galvanised	Dee	Screw	3	6	4.88
200225P	25	Electro Galvanised	Dee	Screw	5	6	9.86

**NOT TO BE USED FOR LIFTING**



## PRODUCT REFERENCE GUIDE

Part Number	Page Number
200205P	17
200206P	17
200208P	17
200210P	17
200211P	17
200213P	17
200216P	17
200220P	17
200225P	17
200305P	16
200306P	16
200308P	16
200310P	16
200311P	16
200313P	16
200316P	16
200320P	16
200325P	16
205305P	16
205306P	16
205308P	16
205310P	16
205311P	16
205313P	16
205316P	16
205320P	16
205325P	16
230010	14
230013	14
230016	14
230020	14
230023	14
230025	14
230028	14
230032	14

Part Number	Page Number
230035	14
230038	14
230042	14
230045	14
230050	14
230056	14
230306	15
230310	15
230313	15
230316	15
230320	15
230323	15
230325	15
230328	15
230332	15
230335	15
230338	15
230342	15
241306P	9
241308P	9
241310P	9
241311P	9
241313P	9
241316P	9
241319P	9
241322P	9
241325P	9
241329	10
241332	10
241335	10
241338	10
241344	10
241351	10
242305P	9
242306P	9

Part Number	Page Number
242308P	9
242310MP	8
242311P	9
242313MP	8
242316MP	8
242319MP	8
242322MP	8
242325MP	8
242329	11
242332	11
242335	11
242338	11
242344	11
242351	11
242363	11
243313	12
243316	12
243319	12
243322	12
243325	12
243329	12
243332	12
244313	13
244316	13
244319	13
244322	13
244325	13
244329	13
244332	13
244335	13
244338	13
244345	13
244351	13
244357	13
244363	13



# SHACKLES

## SECTION

# 4

## NOTES

---



**NATIONAL HEAD OFFICE  
NEW SOUTH WALES**

Email: [sydneysales@beaver.com.au](mailto:sydneysales@beaver.com.au)  
National Sales: 1300 783 606  
Phone: (02) 8882 5700  
Fax: (02) 8882 5899

55 Sarah Andrews Close  
Erskine Park NSW 2759  
PO Box 5001  
St Clair NSW 2759

**WESTERN AUSTRALIA**

Email: [perthsales@beaver.com.au](mailto:perthsales@beaver.com.au)  
Ph: (02) 8882 5700

**VICTORIA/ TASMANIA**

Email: [melbournesales@beaver.com.au](mailto:melbournesales@beaver.com.au)  
Ph: (02) 8882 5700

**SOUTH AUSTRALIA/  
NORTHERN TERRITORY**

Email: [adelaidesales@beaver.com.au](mailto:adelaidesales@beaver.com.au)  
Ph: (08) 8244 3555  
Fax: (08) 8244 3533

**QUEENSLAND**

Email: [brisbanesales@beaver.com.au](mailto:brisbanesales@beaver.com.au)  
Ph: (07) 3279 1100  
Fax: (07) 3279 1381

[www.beaver.com.au](http://www.beaver.com.au)

Specifications and dimensions are subject to change without notice  
© Copyright Beaver Brands 2015